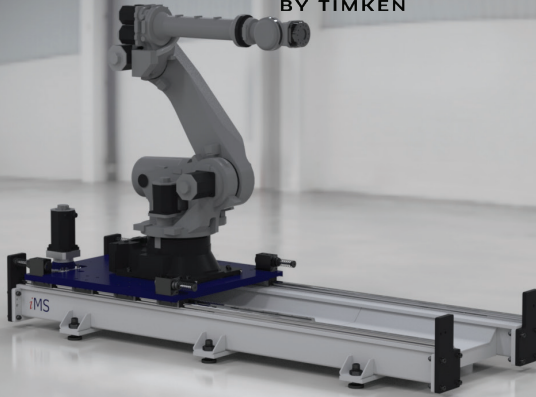


# ROLLON<sup>®</sup> iMS

BY TIMKEN



BEST DELIVERY | FASTEST PROPOSALS | DESIGNS TAILORED TO END USER SPECS | 10<sup>6</sup>M LIFE | PAYLOADS TO 50,000KG

## SOLUTIONS FOR ROBOTS

### RTU<sub>n</sub>

#### ROBOTIC TRANSPORT UNIT NON-COVERED

Solution For All Industrial Robot Sizes And Series

Static Payloads From 1kg - 50,000kg  
Dynamic Payloads From 1kg - 20,000kg  
For Speeds Up To 3000mm/sec\*

Sizes Available: RTUn-20, RTUn-200, RTUn-400, RTUn-800, RTUn-1200, RTUn-2000



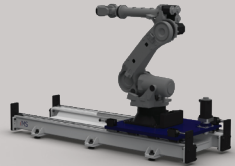
### RTU<sub>sd</sub>

#### ROBOTIC TRANSPORT UNIT STANDARD DUTY

Standard Duty Solution For All Industrial Robot Sizes And Series

Static Payloads From 1kg - 50,000kg  
Dynamic Payloads From 1kg - 20,000kg  
For Speeds Below 1000mm/sec\*

Sizes Available: RTUsd-20, RTUsd-200, RTUsd-400, RTUsd-800, RTUsd-1200, RTUsd-2000



### RTU<sub>f</sub>

#### ROBOTIC TRANSPORT UNIT FULLY-COVERED

Fully Covered Solution For The Harshesht Environments

Static Payloads From 1kg - 15,000kg  
Dynamic Payloads From 1kg - 5,000kg  
For Speeds Up To 3000mm/sec\*

Sizes Available: RTUf-20, RTUf-200, RTUf-400, RTUf-800



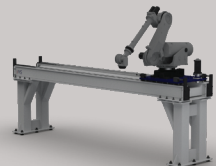
### RTU<sub>e</sub>

#### ROBOTIC TRANSPORT UNIT ELEVATED

Elevated Solution For All Industrial Robot Sizes And Series.

Static Payloads From 1kg - 50,000kg  
Dynamic Payloads From 1kg - 20,000kg  
For Speeds Up To 3000mm/sec\*

Sizes Available: RTUe-20, RTUe-200, RTUe-400, RTUe-800, RTUe-1200, RTUe-2000



\*As With Any Application, Speeds Are Determined By Various Factors, Such As Payload, Robot Size, Customer Motor Selection, Etc. Speeds Listed Are For Baseline Example Purposes Only, And Will Not Reflect Your Specific Application.

Get A Quote At [www.rollon-ims.com/quote](http://www.rollon-ims.com/quote)

# GANTRY SOLUTIONS

## GTU<sub>p</sub>

### PORTAL GANTRY TRANSPORT UNIT

Static Payloads From 1kg - 15,000kg  
Dynamic Payloads From 1kg - 3,000kg  
Speeds Up To 3000mm/sec\*

Sizes Available: GTUp-M1, GTUp-M2, GTUp-M3, GTUp-M4

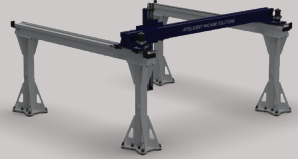


## GTU<sub>a</sub>

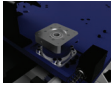
### AREA GANTRY TRANSPORT UNIT

Static Payloads From 1kg - 10,000kg  
Dynamic Payloads From 1kg - 3,000kg  
Speeds Up To 3000mm/sec\*

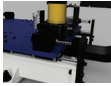
Sizes Available: GTUa-M2, GTUa-M3, GTUa-M4



## WHY ROLLON-IMS?



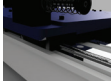
Precision torque dense reducers with motor adapters available for all common seventh axis motor makes and models. Motor sizing assistance, using our gearbox manufacturer's drive sizing calculator, ensures that you get the most out of your motors.



Off the shelf name brand linear guideways and bearing trucks, that are brand interchangeable in the unlikely event of field replacement. Sized for 100,000km of life.

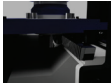


End of travel shock absorbers are in place to ensure proper energy dissipation in the event of a power failure or collision.

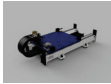


Rack and pinion drives with standard repeatability of 0.040mm (+/- 0.020) with high precision options approaching 0.001mm.

Rollon-IMS machine leveling assemblies help precisely level your machine even on less than flat floors. With the original through leveler anchoring system, that allows you to drill and anchor through the center of the jack bolt.

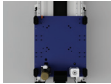


Rollon-IMS does not design or manufacture its own gearboxes (servo reducers), drive components, linear guideways, widgets, etc. Rollon-IMS utilizes globally distributed purchase components which are, in some cases, even brand interchangeable depending on the application/use. Rollon-IMS exercises the preference to utilize machine tool grade, commercially available off the shelf (COTS) purchase components, so that our customers have access to competitive spare parts, should the need ever arise in the field.



Rollon-IMS machines are easy to assemble and maintain using standard tools and are designed with ease of assembly and maintenance in mind.

All Rollon-IMS solutions include precision machined linear guideway, bearing truck, and rack surfaces. This allows for precise fit, long life, ease of assembly, and field maintenance.



All Rollon-IMS machines are sandblasted and powder-coated for extreme durability in any environment or sandblasted and professionally wet-painted should any parts be too large for powder-coating.

Durable and easy to use cable carriers with sizing assistance. We help make sure your cables keep moving safely and smoothly.

All Rollon-IMS machines feature machined ends for multi base connections as well as future expansion or re-purposing.

Hole patterns available for all makes and models of robots.

## OTHER PRODUCTS, SERVICES, AND CONTACT

### OTHER AVAILABLE PRODUCTS

- Wall Mount Robotic Transport Units
- Inverted Mount Robotic Transport Units
- Extreme Solutions - Solutions For Welding And Paint Booths
- Rotary Solutions - Headstock, Tailstocks, And Rotary Tables
- Custom Machinery

### AVAILABLE SERVICES

- Laser Metrology (Leica Absolute Laser Tracker)
- Professional Field Assembly And Service
- Large Format Fabrication And Machining
- Conceptual Design

### CONTACT

Rollon-IMS  
1269 E. Mount Garfield Rd. Suite D  
Norton Shores, MI 49441  
Phone: 616.607.9751  
Email: [solutions@imachinesolutions.com](mailto:solutions@imachinesolutions.com)

**ROLLON<sup>®</sup>IMS**

BY TIMKEN

DESIGNED & BUILT  
IN THE USA



Visit Us At [www.rollon-ims.com](http://www.rollon-ims.com)